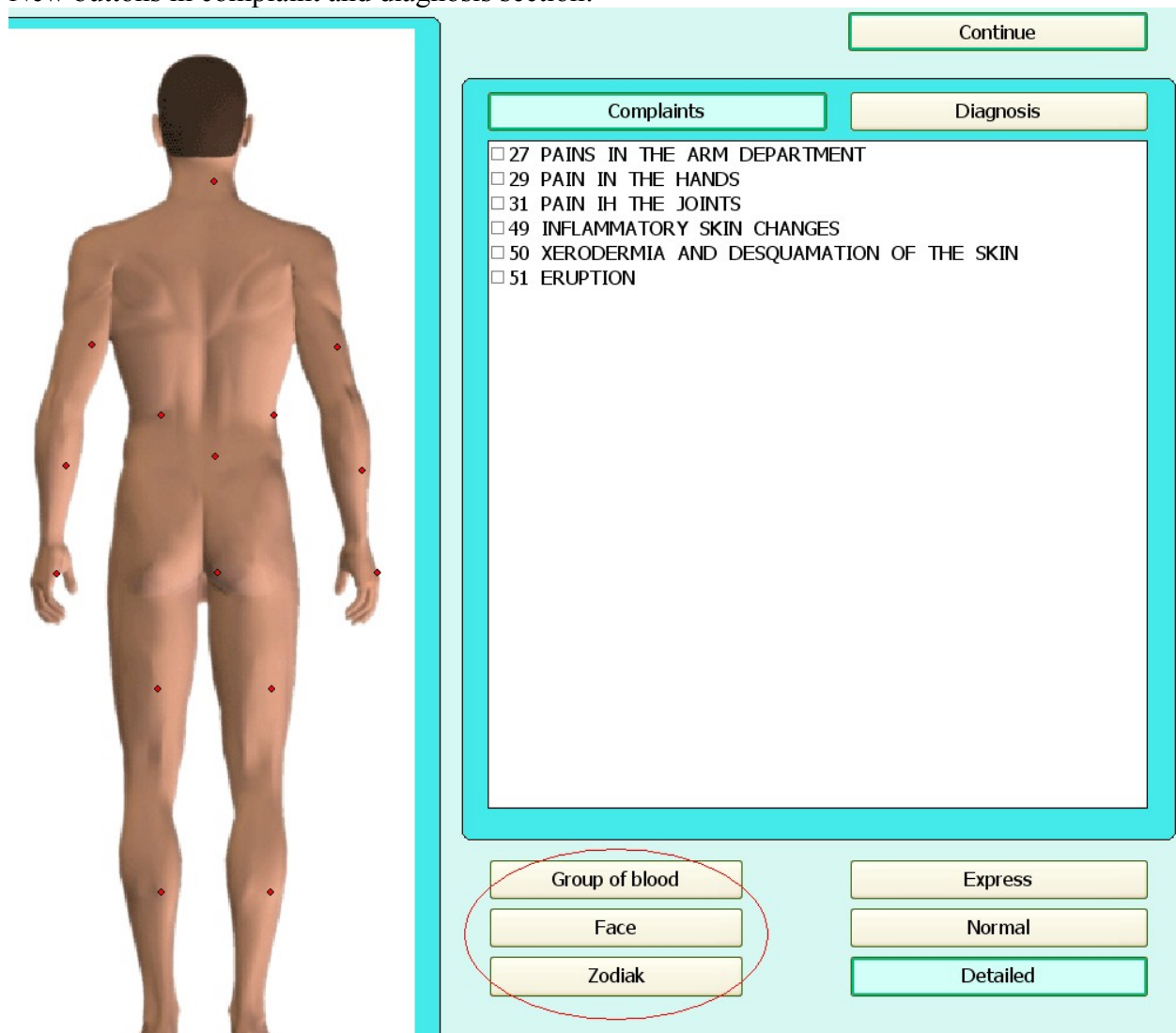


The new program:  
greatly increases accuracy of the research  
shows more than 2-fold increase in processing speed  
has dozens of new etalons  
includes hundreds of organs, including muscles, bones, cells, DNA structure  
has new functions and features (including clients' requests)  
is translated into 58 languages, including rare characters and ligatures.

New buttons in complaint and diagnosis section:



When you click the **Group of blood**, a window with description of people characteristics with this blood group appears. Using the arrows > and < under the image, you can view the features of other blood groups.

I (0) People with this blood group tough physically and mentally. Neuroses and psychosomatic disorders they hardly threatened. Immunity active. Usually they live a long time. For others, they are prone to allergies, asthma, gastric ulcer and 12 duodenal ulcer, diseases of the respiratory system (pneumonia, etc.), skin diseases, syphilis, inflammation (colitis, arthritis, etc.). Of Oncology, they often found lung, breast, tongue. Blood clotting was decreased, so embolism, infarctions, thrombosis rare, but there is a tendency to hemorrhage, and, consequently, to a stroke.

Group of blood

Face

Zodiak

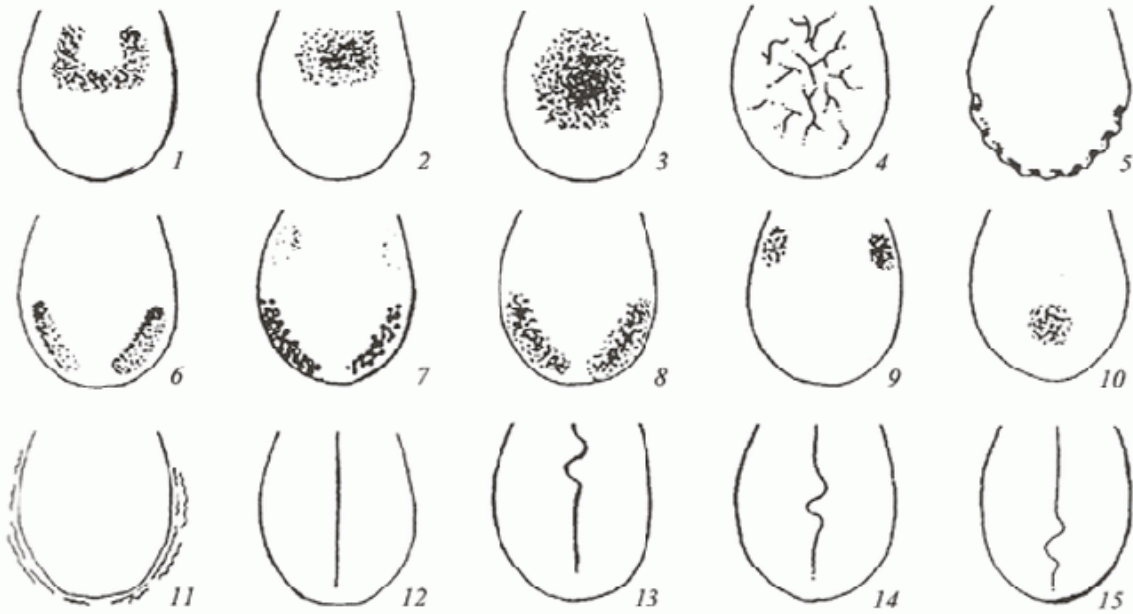
Express

Normal

Detailed



Button Face opens a section in which the doctor can view information on the correlation characteristics on the face of a patient (acne, flaking and redness)with possible problems in his health.

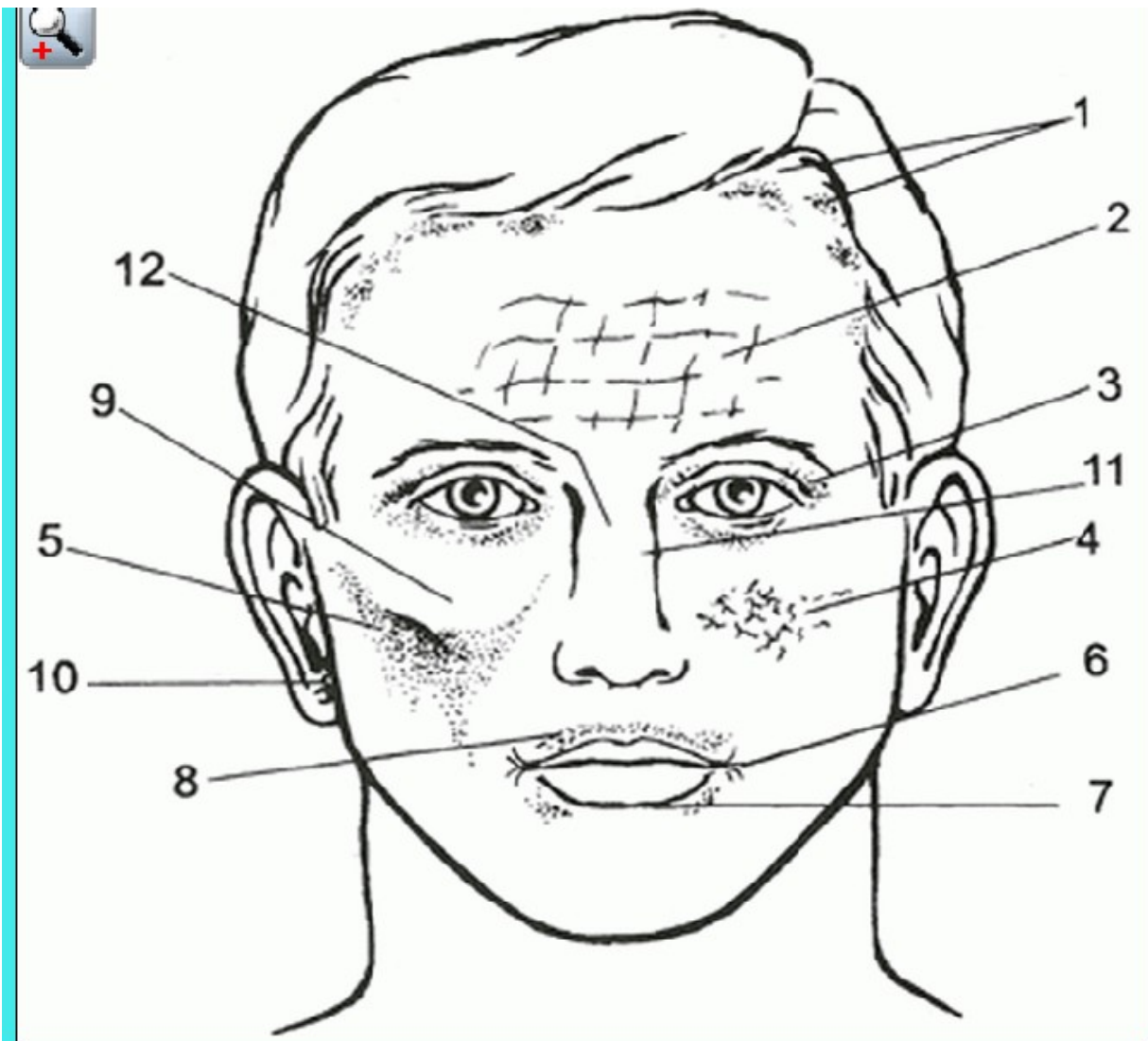


#### INTERPRETATION OF TROPHIC CHANGES IN LANGUAGE

1. Increased sensitivity of the colon.
2. Toxins in the colon (white).
3. Toxins in the gastrointestinal tract.
4. Chronic disorders of the colon.
5. Chronic enterocolitis (teeth marks).
6. Hypofunction of the lungs.
7. Chronic bronchitis (foam strike).
8. Bilateral pneumonia (brown).
9. Kidney disorders.

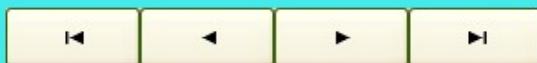


Text



### Liver problems

- 1 A brown spot at the root hair
- 2 wrinkles longitudinal and transverse
- 3 brown coloring around the eyes
- 4 Web vessels
- 5 hollowness right cheek
- 6 wrinkles in the corners of the mouth
- 7 thickened lower lip
- 8 brown stains around the mouth
- 9 "wax" cheekbones



Text

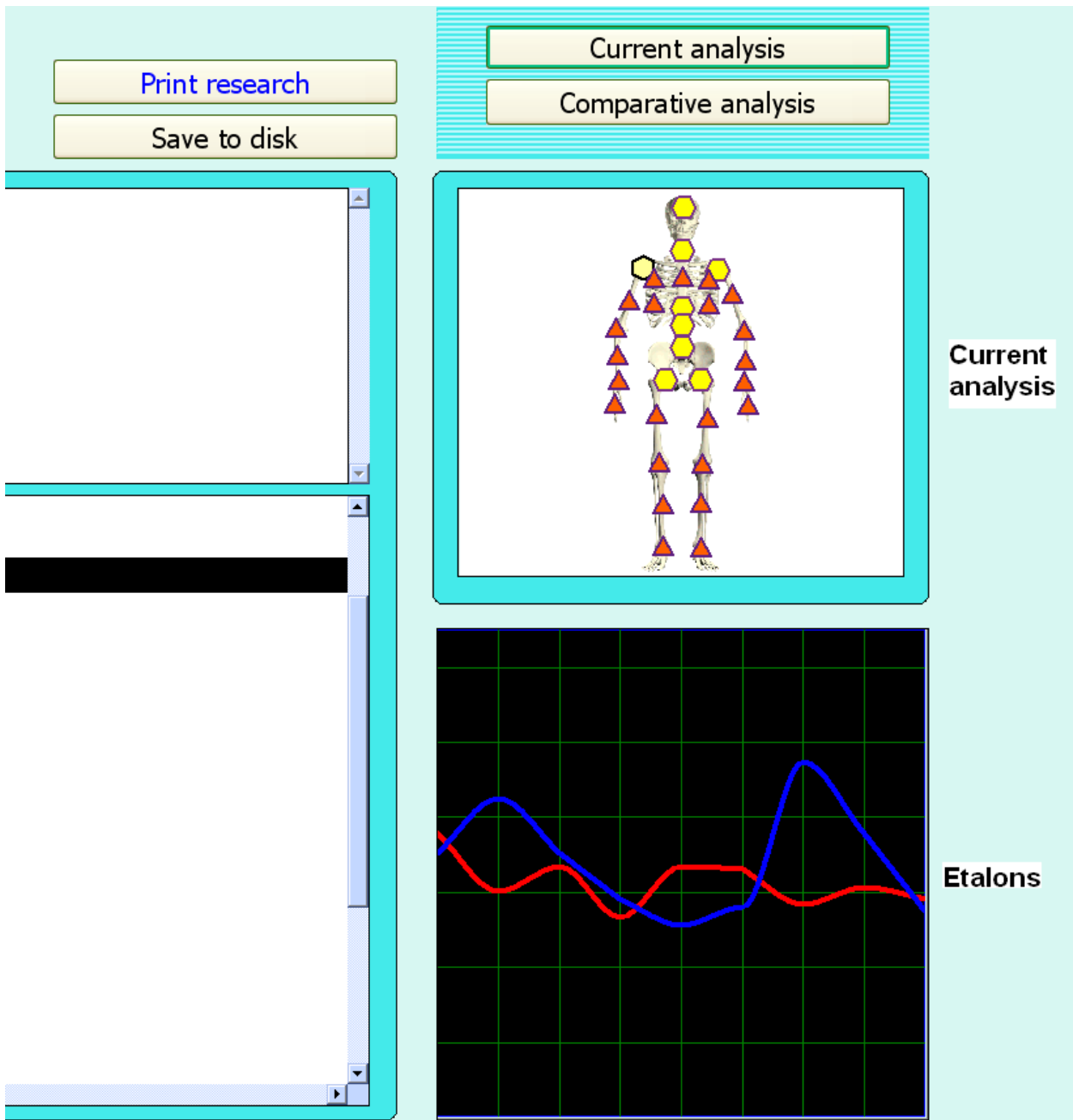
Using the arrows at the bottom you can turn the pages.

Button ZODIAC respectively shows the characteristics of people born under certain zodiac sign

There are images of organs and graphic charts in the card-files window .

If you click on the image of the organ you then pass into the section Current Analysis (the same as when you click on Current Analysis).

When you click on the chart you will immediately find yourself in etalon window.



Function to save the research list.

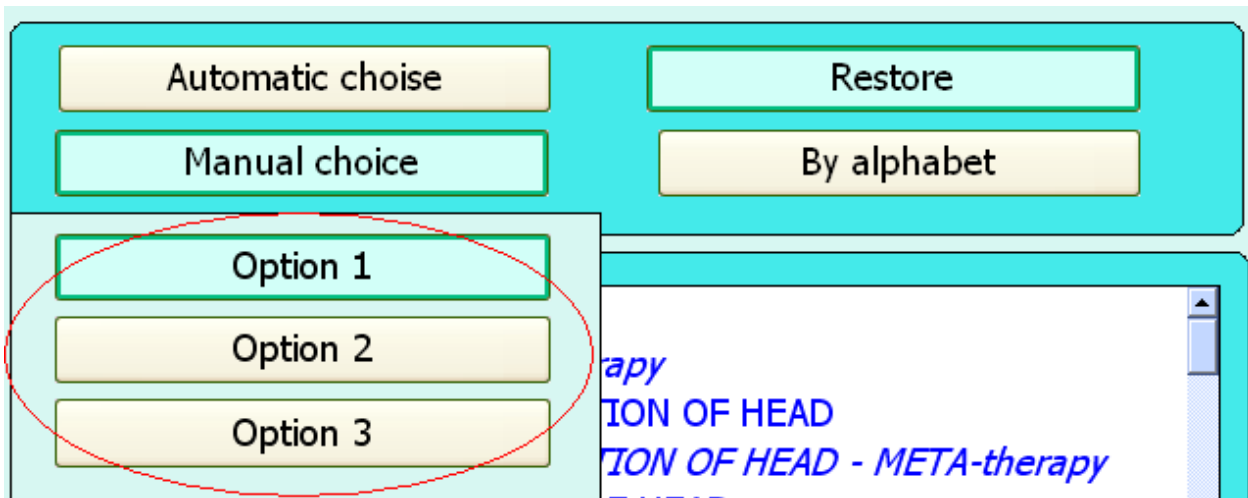
This program automatically carries out a complete examination of a person immediately after the collection of complaints. Based on this examination the program 'offers' a problem organs' and / or systems' 'kit' to a doctor. In the window with list of organs for research you can see that some organs are marked with a tick - the program offers to examine them.

But the doctor can make his own choice.

To do this he needs to tick those entities that he wants to examine. If the organ has already been chosen - re-pressing the tick mark will clear the selection. If you want to erase all the ticks, which are offered by the program - click on Restore — it will clear all the checkboxes in front of all the organs (no matter who chose them them, the doctor or the program). To restore them, click on the button that appears on the site of Restore - button Uncheck to restore the previous selection. If you want to go back to the choice made by the program - click Automatic choice.

Experiences doctors often have their own, favorite set of organs and / or systems. In order not

to browse the entire list of organs in the beginning of each study in this program the operator can save 3 standard examination designs.



- choose one of three buttons, for example, Option 1
  - with placing and removing the check mark (ticks!), pick up the outline for the study. After exiting the scheme will remain in the button Option 1.
- Similarly, you can create scheme 2 and 3.

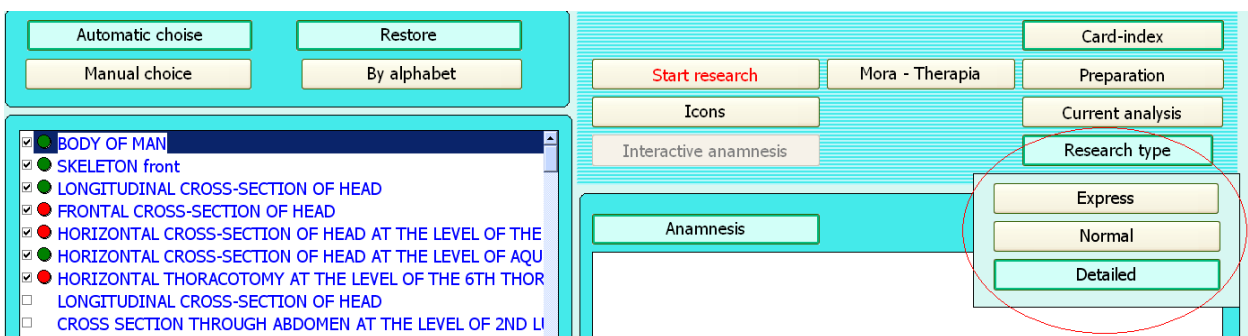
If you want to make changes to Option X - click on the Option X and add or remove every tick manually. Restore button will not work, rather it will work, but that it cancel will not be stored in the Option.

And so:

One-time study - the button Restore + checkmark(tick) opposite the organ.

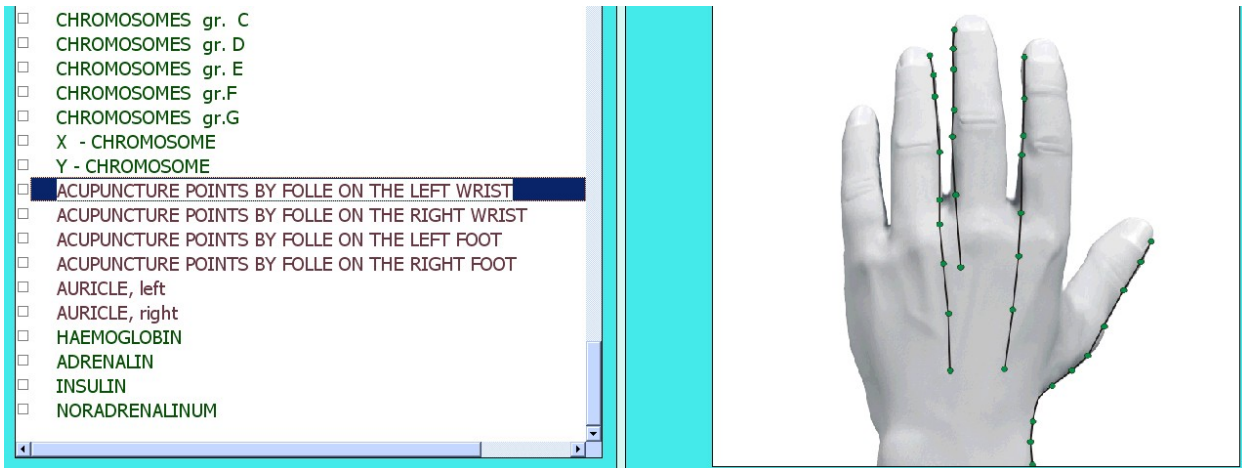
Creating and saving examination schemes - Option X + tick and remove checkmarks opposite the organ.

Likewise there were changes in the **Research type choice**

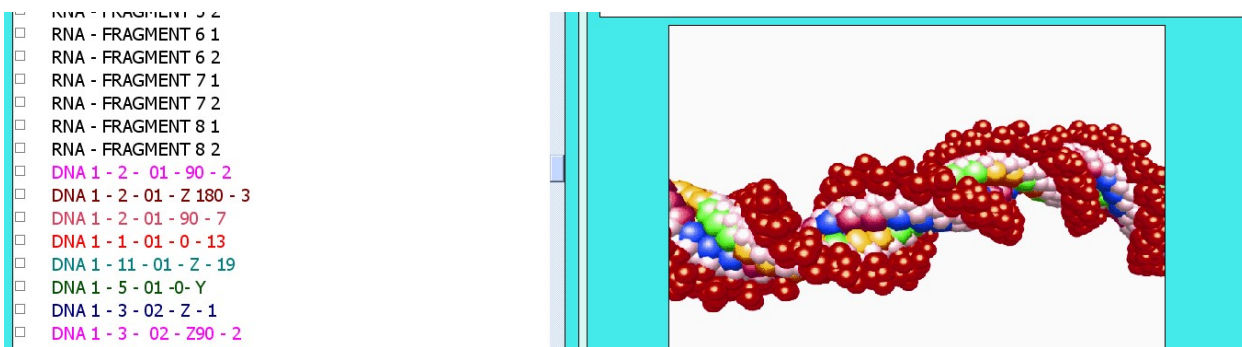


Express - contains the organs that were in previous versions of the program.

Normal - organs added into each section + acupuncture points on R. Voll

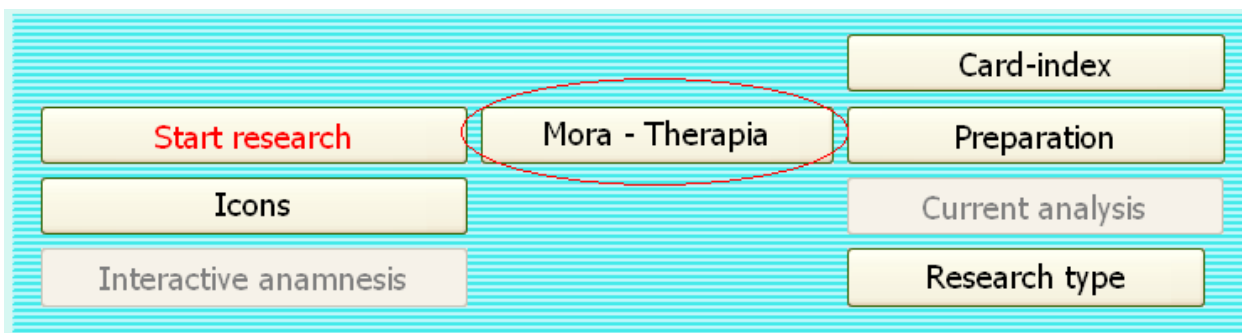


Detailed - vertebrae, a detailed analysis of DNA, the more cells.



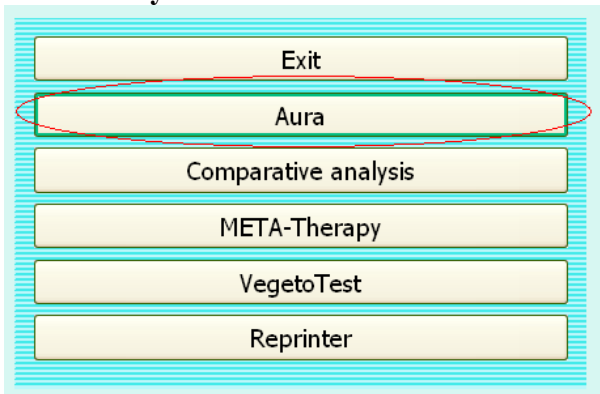
The doctor can create his own selections (Option X) in each section separately and they will remain in the program.

New function – **Auto-therapy** was added.



A doctor diagnoses a client. Then click on this button and the program automatically generates meta-correction of organs and systems examined this day. The client relaxes, the physician rests 😊

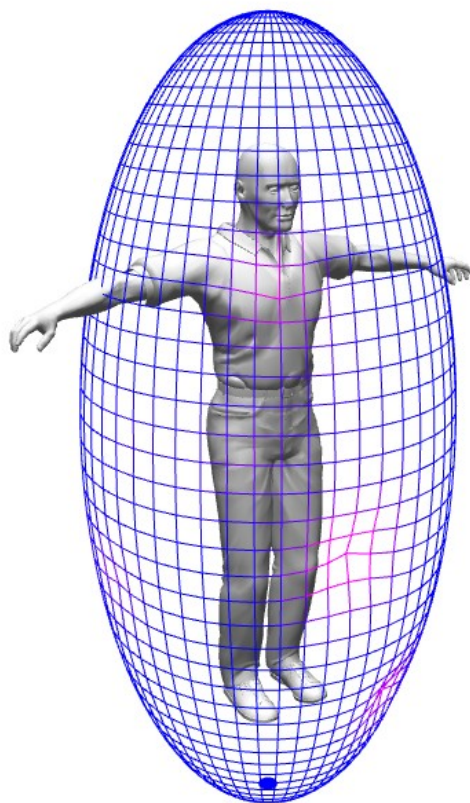
In the **Analysis** we can see the aura



After clicking this button you get into the Aura section.

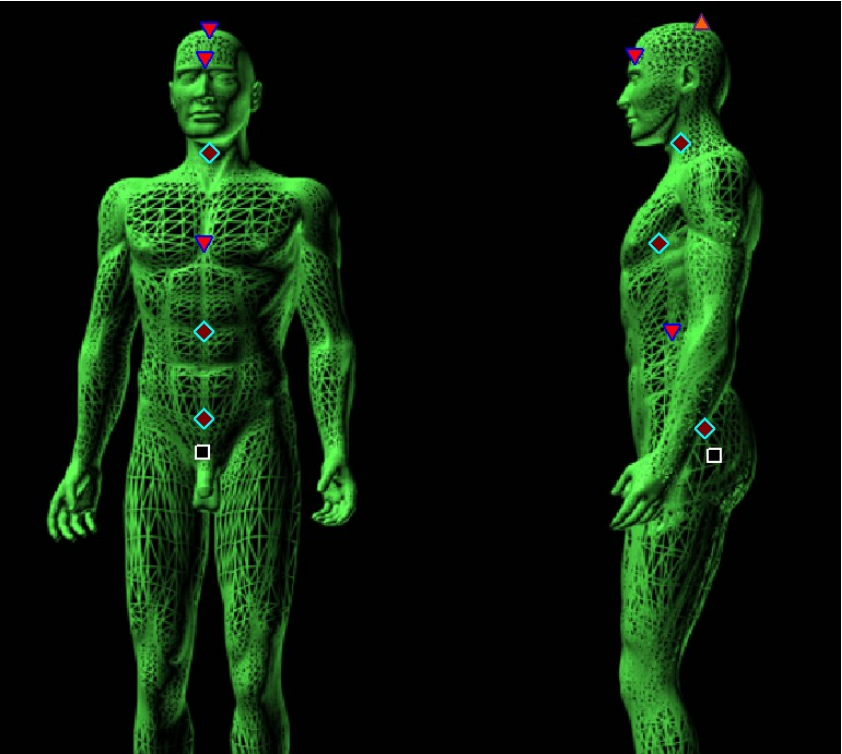
This window shows the client in the "shell" Using your mouse, you can rotate the image in all directions. The closer the aura comes to the human body, the more it is damaged. Damaged areas are highlighted in red aura.

When you click on the arrow the image starts to rotate clockwise. Repressing the button stops rotation.





Also in the program an option to assess the condition of the body the chakras has been added(the picture may be different)



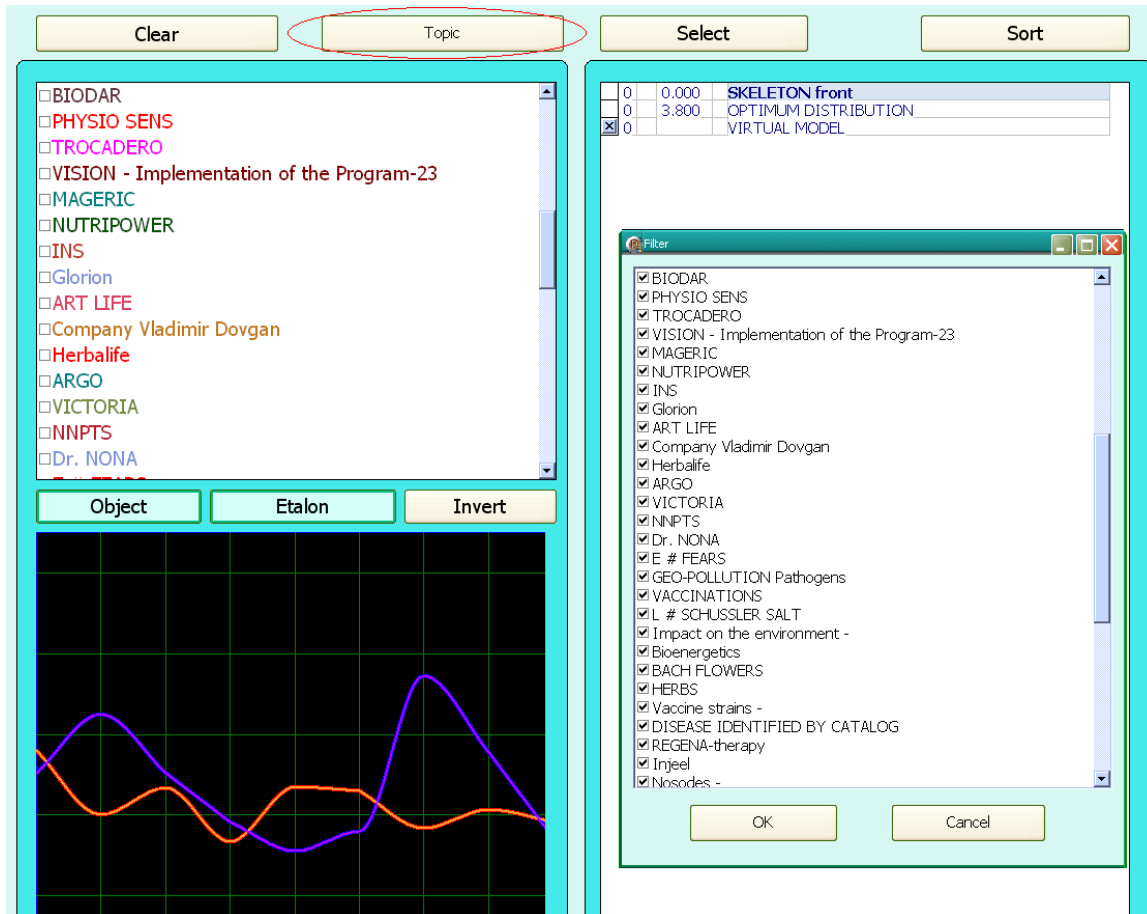
and meridians



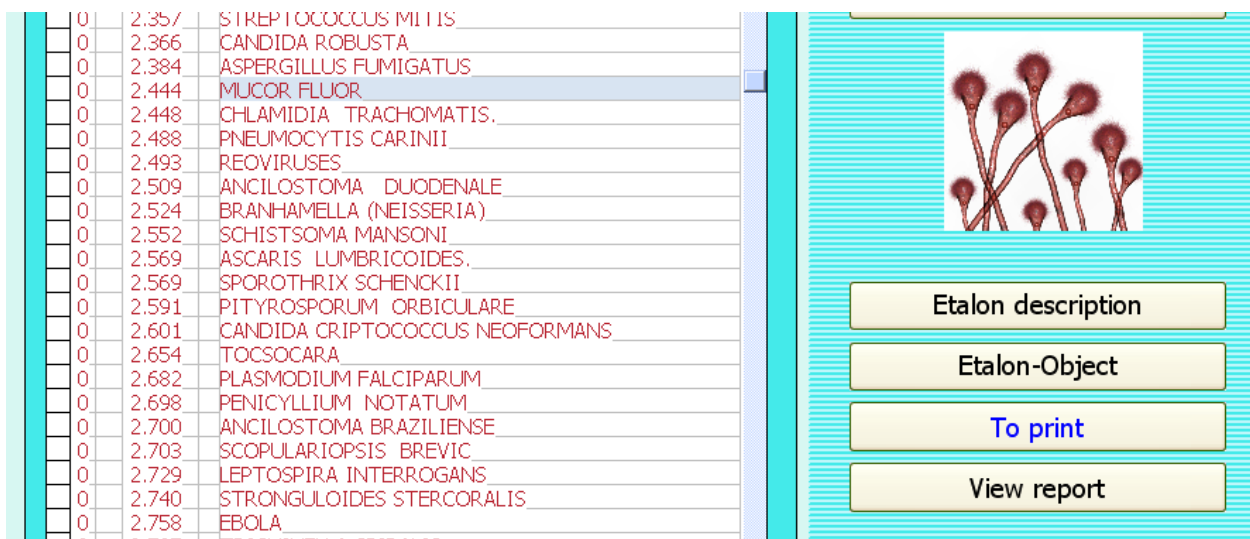
## Select a scheme of Etalons

The program contains a large base of etalons. But no doctor enjoys all!

To create your list use the button TOPIC, located above the list of etalons. The window opens with a list of all the etalons inserted into a database program. Mark with the tick those you use most often. They will appear in the program in the list of standards.



Also in the etalon window you can see images of some etalons - plants, stones, microbes ... This image database will be constantly updated with new ones.



When transferring patients to or from the program the function of selection has been made. You can use the arrow on the keyboard and the SHIFT key to highlight the data of patients you want to transfer.